

COBY™

DP-151

1.5" Color LCD Digital Photo Key Chain



Setup Instructions

STEP-1

Determined Your Version:

On the back of the Unit-

On the back of the unit, below where it reads “Made in China”, your Key Chain version should be listed as **151MP, 151SX or DPKEY**.

Getting Started- VERSION 151SX & DPKEY

To get started using your digital photo keychain:

STEP-2

Install- Insert the Driver CD into your CD/DVD drive. The auto run will read the Driver CD, You will be prompt with two folders. Select the “Windows_PhotoView V1.2” folder and double click on the “Setup.exe” file.

OR

The Driver CD files can be downloaded from our web site. Click on the link below

http://www.cobyusa.com/_en/support_md_drv.php?prod_id=DP151

Select your Key Chain version and click download.

STEP-3

Connect the Key Chain to your computer using the supplied USB cable. Upon connecting the Key Chain to your computer, the Key Chain will prompt you to set the device to “USB Charge or USB Update”. Select USB Update by pressing the RIGHT button and then MIDDLE button.

STEP-4

Run the Photo Viewer Software to transfer photos to the Key Chain. Double-click on the Photo Viewer icon located on your desktop.

STEP-5

Locate the images on your computer (See Diagram)

NOTE:

To select multiple files, on your Keyboard, click on the desire file's while holding the "Ctrl" button.

STEP-6

Highlight the images files that will be transferred to the Key Chain (See Diagram)

STEP-7

Transfer the highlighted images to the Device Panel (See Diagram)

STEP-8

Transfer the images from the Collection panel to the Key Chain (See Diagram)

STEP-9

Disconnect the Key Chain from your computer. **Done !**

PhotoViewer 2.3

STEP 5 - To Locate the image files on your computer, Click on this icon

Browser

Blue hills.jpg Sunset.jpg **Water lilies.jpg**

Winter.jpg

STEP 6 - Highlight the image files that will be transferred to the Key Chain. Click on the file and it will be highlighted.

STEP 7 - Click on this icon to Transfer the highlighted images to the Device Panel

Device

STEP 8 - Click on this icon to transfer the images from the Device Collection panel to the Key Chain.

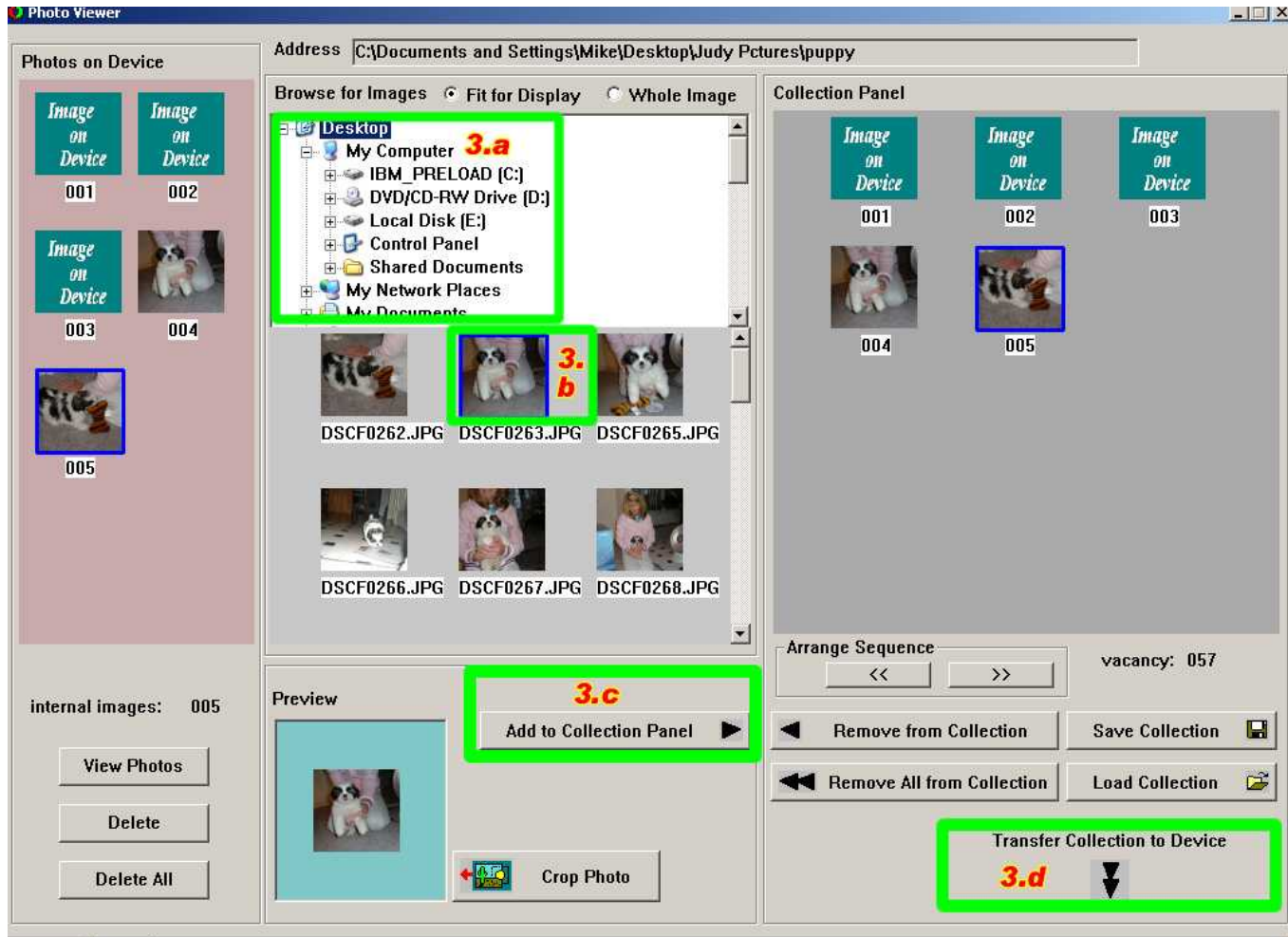
Water lili

Total:1/60 Current

Getting Started- VERSION 151MP

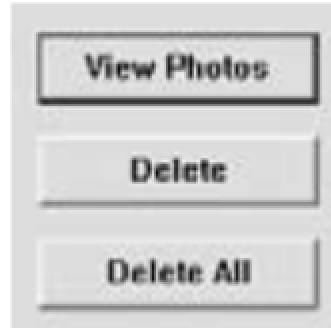
To get started using your digital photo keychain:

1. **Install** the Photo Viewer Software to your computer from the Installation CD. Installing the Photo Viewer software onto your computer to transfer photos to the Key Chain. The software will also allow you to view, delete, and crop photos. After the installation, **reboot** your computer and proceed to Step #2.
2. **Connect** the Key Chain to your computer using the supplied USB cable.
3. **Run** the Photo Viewer Software to transfer photos to the Key Chain. Double-click the Photo Viewer icon located on the desktop to start the Photo Viewer software.
 - a. Locate the image files on your computer
 - b. Select the file's needed to be transferred to the key chain.
 - c. Click on the "Add to Collection Panel".
 - d. Click on the "Transfer Collection to Device"
4. **Disconnect** the Key Chain from your computer. When the transfer is complete, the Key Chain will display "Downloaded". Close the Photo Viewer software and then disconnect the Key Chain from the computer



Key Chain Photo Functions

To view photos on the Key Chain, click on the “View Photos” button.



To delete photos on the Key

- a) Select the photos on the Key Chain that you want to delete.
- b) Click the “Delete” button or to delete all photos from the key chain, click the “Delete All” button

NOTE: To select multiple photos, hold “Shift” or “Ctrl” on the keyboard while clicking with the mouse.

COMMON TROUBLESHOOTING

Problems	Solutions
Can't Find any Photo Viewer, or another program owns it. The program will exit!	<p>*This error message will occur on Version 151SX. The cause of this error message: upon connecting the Key Chain to your computer, the Keychain will prompt you to select "USB Charge or USB update". Select USB update and run the Photo Viewer software.</p> <p>*Make sure you have FULL administrator rights on your computer.</p>
Cannot Connect to the Device	<p>This error message will occur on Version 151MP Un-Plug and Re-Plug the Key Chain to the computer</p> <p>*Reboot the Computer.</p> <p>*Please be sure to use the correct Photo Viewer Software(Check your Key Chain Version)</p>
Download Fail	<p>This error message will occur on Version 151SX.</p> <p>*Unplug the Key Chain from your computer. Turn the Key Chain off, by pressing the MIDDLE button TWICE, and then reconnect the Key Chain to your computer while the Key Chain is turned off.</p> <p>Run the Photo Viewer Software to transfer your files.</p>

Unrecognized able Device

Check the USB Cable to make sure it is connected properly.
Replace the USB Cable.

If you have a problem with this device, please check our website at www.cobyusa.com for Frequently Asked Questions (FAQs) or any updates on this product. If these resources do not resolve the problem, please contact Coby Technical Support.

Hours: 8:00 AM–11:00 PM EST, seven days a week.

Phone: 800-727-3592